

**Nami 45x45**

Created on\_24/10/16

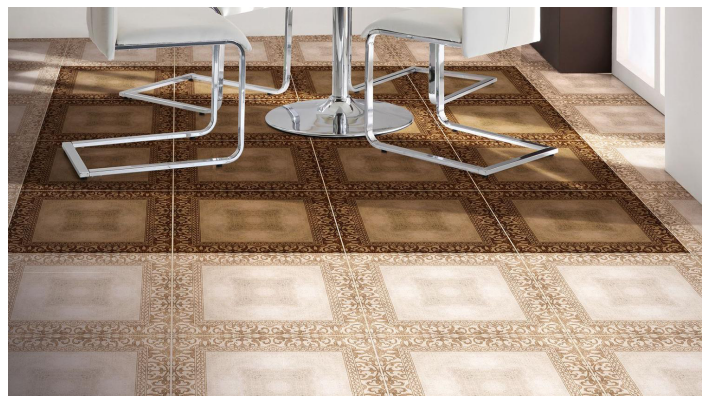


**ABSOLUT KERAMIKA**

[www.absolutkeramika.com](http://www.absolutkeramika.com)



## Gallery



tel.: (+34) 964 657 738  
fax: (+34) 964 322 151

[info@absolutkeramika.com](mailto:info@absolutkeramika.com)  
[www.absolutkeramika.com](http://www.absolutkeramika.com)

The results shown are approximate. This document does not constitute a contractual relationship.  
To order or check availability of products, contact the company.



## Nami 45x45

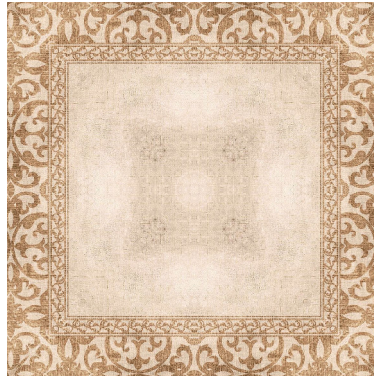
Created on\_24/10/16



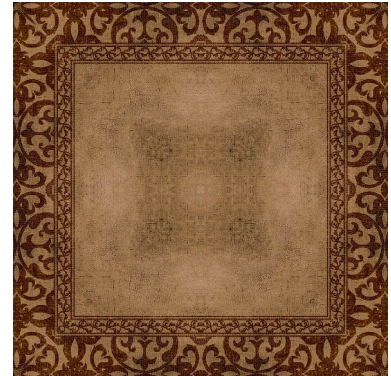
## Base



NAMI BEIGE 45X45  
B16



NAMI CREMA 45X45  
B16

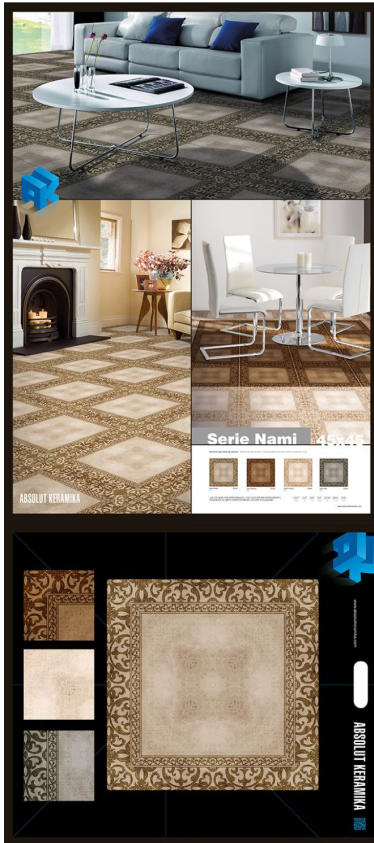


NAMI MARRON 45X45  
B16

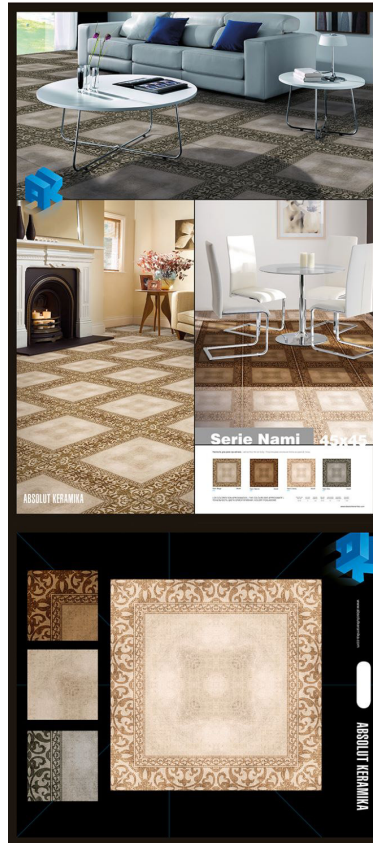
## Packing

Size	Pieces/Box	m2/Box	Kg/Box	Boxes/Pallet	m2/Pallet	Kg/Pallet
45x45	8	1.62	32	44	71.28	1408

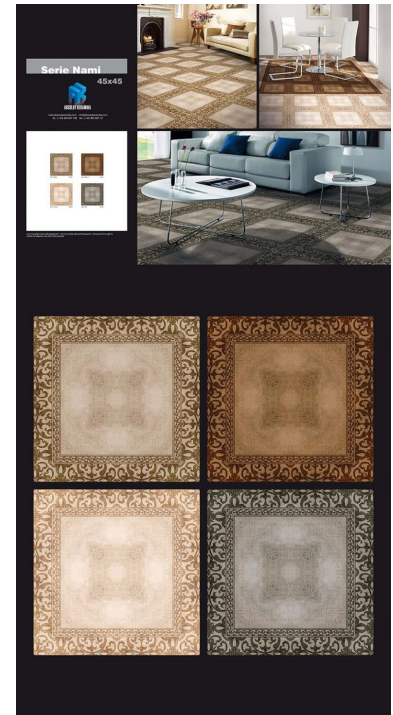
## Merchandising



PE NAMI BEIG 45X45 (80X180)



PE NAMI CREMA 45X45 (80X180)



PT NAMI (45X45) 1925X1005